



**P06 Chalk**



**P07 Alabaster**



**P75 Pearl**



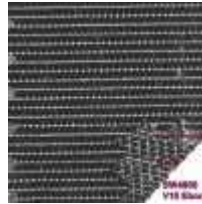
**Q97 Sand**



**Q98 Mocha**



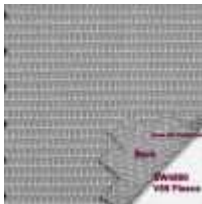
**Q99 Taupe**



**V10 Ebony**



**V16 Grey**



**V59 Fleece**



**V60 Clay**



**V61 Mink**



**V62 Flint**

**Phifer Sheerweave 4800 - 1% Open, 0.036" Thick, 18.5 oz/yd<sup>2</sup>**

The Sheerweave 4800 is designed with privacy in mind and offers maximum UV blockage.

Material Composition - App. 24% Polyester, 76% Vinyl on Polyester

Material Roll Width is 96"

This material will be seamless in sizes up to 97.25" W \* x Any Height

Shades wider than 97.25" W Tip to Tip and 93.5"H or taller will be railroaded \*\* and will have a horizontal seam in the material at app. 93.5" from the bottom.

This material is slightly direction. If a shade is railroaded due to its size we recommend railroading all the shades in the same room.

\* Tip to Tip Measurement Including Space for Brackets

\*\* Railroading is when the width of the material roll is used for height.

MFG Specifications are subject to change without notice.

[Roller Shade Index Page](#)

[Roller Components Index Page](#)

[AV Outlet Home Page](#)