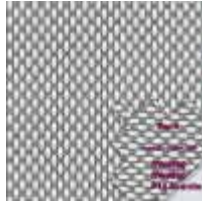
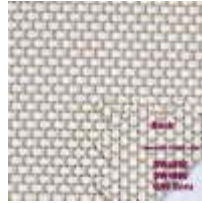




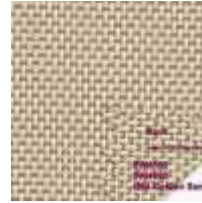
**P06 Chalk**



**P10 Granite**



**Q59 Ecrú**



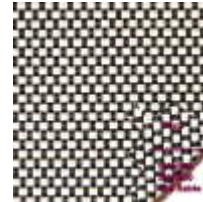
**Q60 Golden Sand**



**V10 Ebony**



**V44 Sandstone**



**V46 Sable**

**Phifer Sheerweave 4600** - 3% Open, 0.030" Thick, 17.4 oz/yd<sup>2</sup>

**Phifer Sheerweave 4500** - 5% Open, 0.024" Thick, 14.4 oz/yd<sup>2</sup>

These Sheerweave materials are polyester yarn basket weaves that are ideal for applications requiring a more opaque and non directional fabric.

Material Composition - App. 22% Polyester, 78% Vinyl on Fiberglass

Material Roll Width is 98"

This material will be seamless in sizes up to 99.25" W \* x Any Height

Shades wider than 99.25" W Tip to Tip and 95.5"H or taller will be railroaded \*\* and will have a horizontal seam in the material at app. 95.5" from the bottom..

\* Tip to Tip Measurement Including Space for Brackets

\*\* Railroading is when the width of the material roll is used for height.

MFG Specifications are subject to change without notice.

[Roller Shade Index Page](#)

[Roller Components Index Page](#)

[AV Outlet Home Page](#)