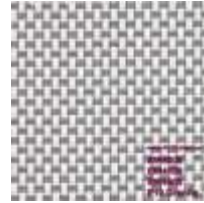




P06 Chalk



P07 Alabaster



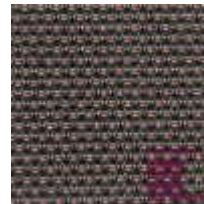
P10 Granite



Q12 Pebblestone



Q15 Greystone



Q16 Tobacco



V07 Pewter



V10 Ebony



V15 Ash

Phifer Sheerweave 4400 - 3% Open, 0.037" Thick, 20.7 oz/yd²

Phifer Sheerweave 4000 - 5% Open, 0.036" Thick, 19.2 oz/yd²

Phifer Sheerweave 4100 - 10% Open, 0.035" Thick, 17.5 oz/yd²

These Sheerweave materials are full basket weaves and were designed for applications which require a thicker and heavier fabric.

Material Composition - App. 25% Polyester, 75% Vinyl on Fiberglass

Material Roll Width is 98"

This material will be seamless in sizes up to 99.25" W * x Any Height

Shades wider than 99.25" W Tip to Tip and 95.5"H or taller will be railroaded ** and will have a horizontal seam in the material at app. 95.5" from the bottom.

This material is slightly direction. If a shade is railroaded due to its size we recommend railroading all the shades in the same room.

* Tip to Tip Measurement Including Space for Brackets

** Railroading is when the width of the material roll is used for height.

MFG Specifications are subject to change without notice.

[Roller Shade Index Page](#)

[Roller Components Index Page](#)

[AV Outlet Home Page](#)