



**P02 White**

**P04 White/Bone**

**P05 White/Platinum**

**Q05 Bone**

**Q06 Bone/Platinum**



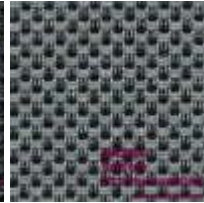
**Q10 Bonze**



**V04 Platinum**



**V21 Charcoal**



**V22 Charcoal/Gray**



**V24 Charcoal/Chestnut**

**Phifer Sheerweave 2000** - 5% Open, 0.019" Thick, 14.26 oz/yd<sup>2</sup>

**Phifer Sheerweave 2100** - 10% Open, 0.020" Thick, 12.4 oz/yd<sup>2</sup>

The Sheerweave 2000 and 2100 are basket weaves designed for those applications which require a more opaque and non directional fabric.



Material Composition - 37% Fiberglass, 63% Vinyl on Fiberglass

Material Roll Width is 96"

This material will be seamless in sizes up to 97.25" W \* x Any Height

Shades wider than 97.25" W Tip to Tip and 93"H or taller will be railroaded \*\* and will have a horizontal seam in the material at app. 93" from the bottom.

\* Tip to Tip Measurement Including Space for Brackets

\*\* Railroading is when the width of the material roll is used for height.

MFG Specifications are subject to change without notice.

[Roller Shade Index Page](#)

[Roller Components Index Page](#)

[AV Outlet Home Page](#)