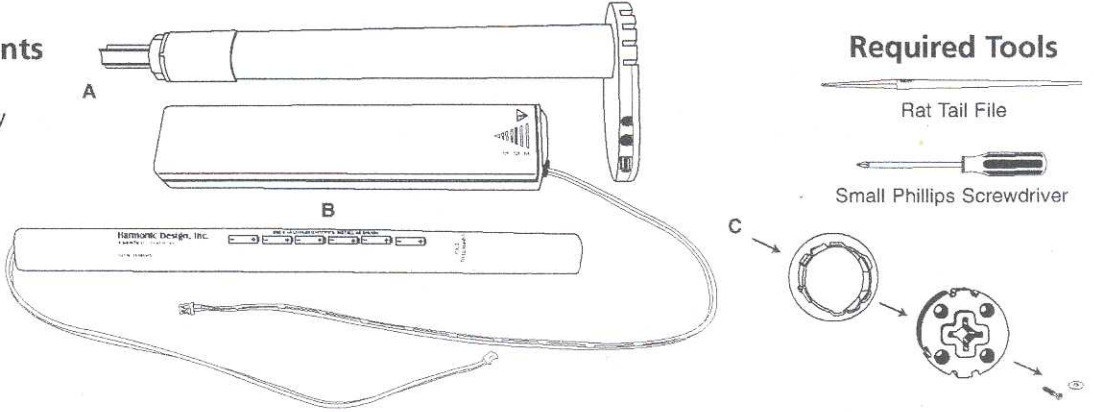


Fabrication Instructions ~ System II

Roller Shades and Solar Screens

Required Components

- A) Tubular Motor Assembly
- B) 6 AA Battery Pack or Optional Battery Wand
- C) Tube Crown/Drive/ Screw & Washer



Required Tools

- Rat Tail File
- Small Phillips Screwdriver

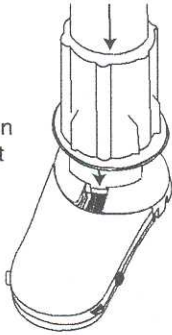
Optional Motor Rotation Motor comes standard as a right side motor. To change the motor to a left side motor:

- a. Remove roller shade insert/plug
 - b. Slide tear drop out of housing
 - c. Rotate tear drop 180°
 - d. Slide back into housing
 - e. Replace insert/plug
-

CAUTION: Excessive force during rotation may detach internal connector. If this happens carefully use a small screwdriver and press connector housing to reinsert.

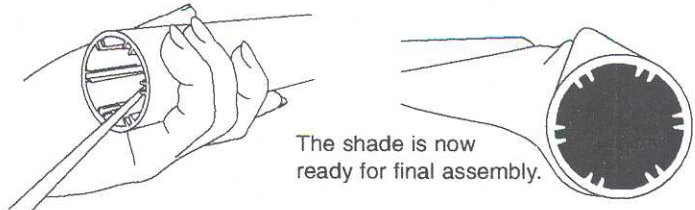
Step 1

Place tube crown over motor with the flat side of the crown placed flush against the motor housing.



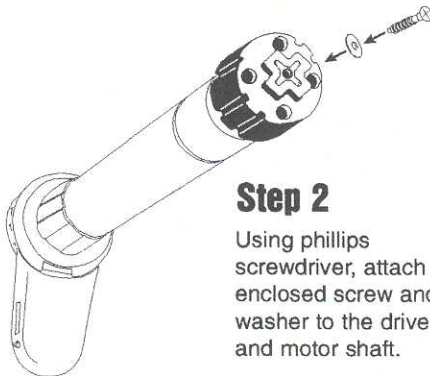
Step 3

Debur the inside of the tube using the rat tail file.



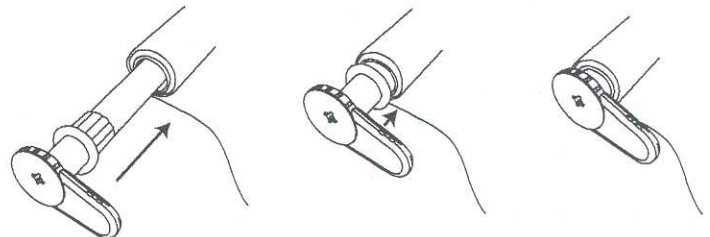
Step 2

Using phillips screwdriver, attach enclosed screw and washer to the drive and motor shaft.



Step 4

Slide motor into tube firmly. Crown and drive must be properly aligned with tube profile.



Roller tube must be aluminum. Motor will not operate when used with steel tube.