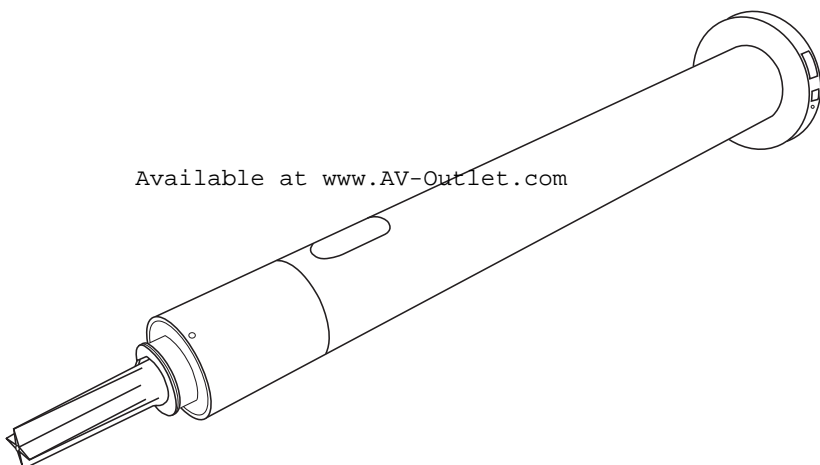




Roll Up WireFree™ IR

Available at www.AV-Outlet.com



Installation instructions

Please read installation instructions and programming instructions completely prior to proceeding with installation and programming. Failure to do so can result in damage to the motor and or the shade.

Be prepared to stop the shade during programming. The programming step where upper and or lower stop limits are set will activate the motor to move without stopping on its own. You will need to stop the motor using the remote as indicated or the shade and motor can get damaged.

Please use the motor specific instructions provided with your motor or shades. The remote control instructions can be used for reference and they are not as accurate as the motor instructions.

If you have any questions regarding programming or installation please call AV Outlet at 1-877-271-5398

Safety

- This Somfy product must be installed by a professional motorization and home automation installer, for whom these instructions are intended.
- Before installation, check that this product is compatible with the associated equipment and accessories.
- These instructions describe how to install, commission and use this product.
- Moreover, the installer must comply with current standards and legislation in the country in which the product is being installed, and inform his customers of the operating and maintenance conditions for the product.
- Any use outside the sphere of application specified by Somfy is not approved. Such use, or any failure to comply with the instructions given herein will invalidate the warranty, and Somfy refuses to accept liability.

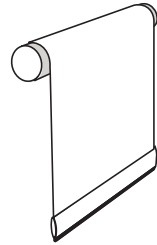
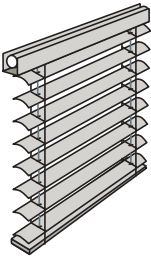
Compatible blinds

Venetian blinds / Silhouette blinds

Roman shades

Roller blinds

Available at www.AV-Outlet.com



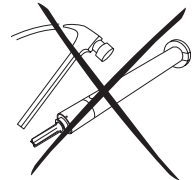
General safety instructions

The safety instructions that must be observed, besides the usual rules, are explained in these instructions and in the attached «Safety Instructions» document.

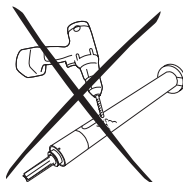
Never immerse the motor in liquid!



Avoid impacts!



Never drill holes in the motor!



Do not drop it!



Installation

Motor preparation

- 1) Fit the crown (a) and drive wheel (b) to the motor.
- 2) Measure the length (L) between the middle of the drive wheel and the head end.

Tube preparation

- 1) Cut the tube to the required length. Deburr the tube and remove the debris.

Motor/tube assembly

- 1) Slide the motor into the tube. Insert the wheel/drive by aligning the wheel to the tube profile. Insert the motor half way and then slide the crown down the motor and insert it in the tube. Finally, push the motor inside the tube.

- 2) Not required, but if needed, fix the tube to the motor with self-tapping screws or steel pop rivets depending on the dimension (L).

Mounting the motorized tube on the brackets

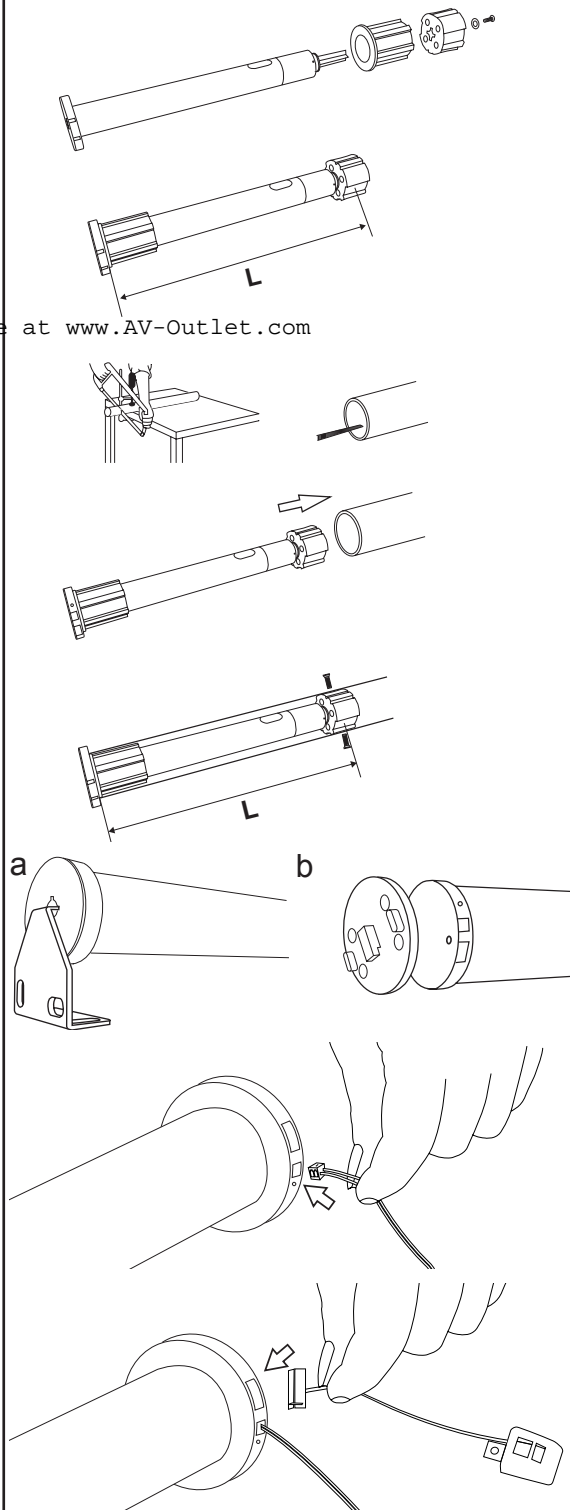
- a) Standard bracket
- b) Motor plate for specific bracket

Wiring

- 1) Connect the battery pack to the motor

- 2) Connect the IR sensor to the motor

Available at www.AV-Outlet.com



Commissioning

Checking the direction of rotation

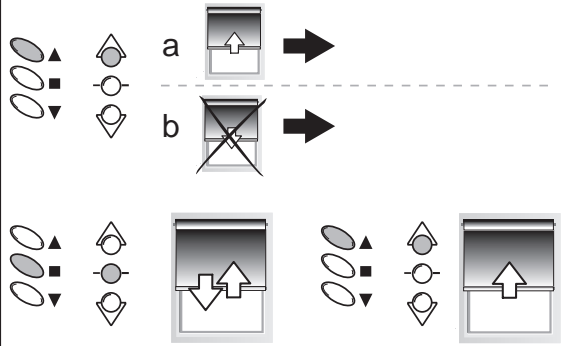
Press the IR control UP button:

a) If the shade is raised, the direction of rotation is correct: move onto the section entitled «Adjusting the end limits».

b) If the shade is lowered, the direction of rotation is incorrect: move onto the next step.

Press the IR control STOP button until the shade jogs: the direction of rotation has been modified.

Press the IR control UP button to check the direction of rotation.



Available at www.AV-Outlet.com

Adjusting the end limits

The limits can be set in any sequence.

1) Press and hold the UP button to move the shade to the desired up position.

2) Press simultaneously the STOP and DOWN buttons and release them once the shade begins to move. The UP LIMIT is memorized.

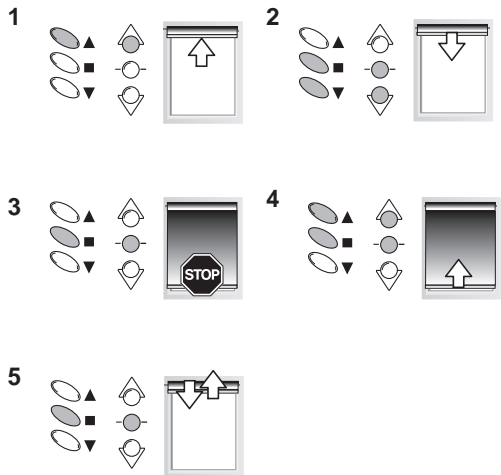
3) Press the STOP button when it reaches the desired down position. If necessary to adjust the down position, press and hold the UP or DOWN button.

4) Press simultaneously the STOP and UP buttons and release them when the shade begins to move. The Down limit is memorized. The shade moves up and will stop at its upper limit.

The Down limit is memorized

The shade moves up and will stop at its upper limit.

5) To confirm the ends limits press and hold the STOP button until the shade jogs. The ends limit are recorded.



Use

Mode Selection

By factory default, the motor is in Tilting mode but you can change from a mode to another.

To change from a Tilting mode to a Roller mode, follow the instruction.

1) Roller Mode

Move the shade to the UP or DOWN end limit.

Press the UP and DOWN buttons simultaneously until the shade jogs.

Press the UP and STOP buttons simultaneously until the shade jogs.

The motor is in Roller Mode.

Available at www.AV-Outlet.com

2) Tilting mode

Move the shade to the UP or DOWN end limit.

Press the UP and DOWN buttons simultaneously until the shade jogs.

Press the DOWN and STOP buttons simultaneously until the shade jogs.

The motor is in Tilting Mode.

MY position

1) Recording MY position.

To set the MY position, move the shade to the desired position using the UP and DOWN buttons then press and hold the STOP button until the shade jogs.

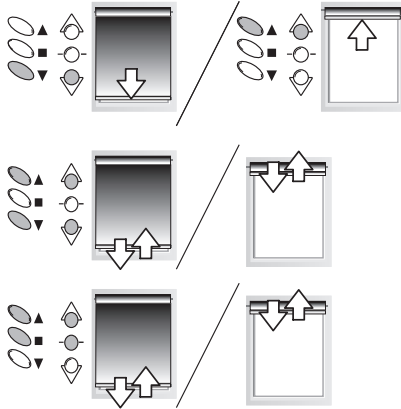
2) Changing the MY position

To change the MY position go to the new desired MY position with the UP and DOWN buttons then press and hold the STOP button until the shade jogs.

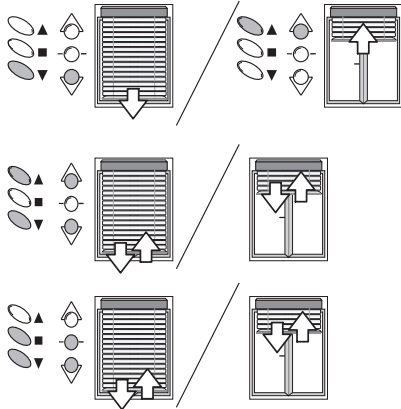
3) Delete the MY position

To delete the MY position, move to this position and press and hold the STOP button until the shade jogs.

ROLLER MODE



TILTING MODE



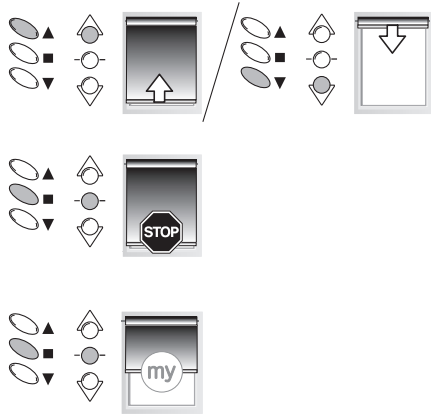
UP, DOWN and MY

1) To move the shade from a LIMIT to the other LIMIT, press briefly the UP or DOWN button.

2) To stop the shade, press the STOP button.

3) To move the shade to the MY position, press briefly the STOP button.

4) In Tilting mode, to orientate the slats, press and hold the UP or DOWN button until the slats reach the desired position.



Available at www.AV-Outlet.com

Assign/Deleting a channel

Only with the IR8 transmitter.

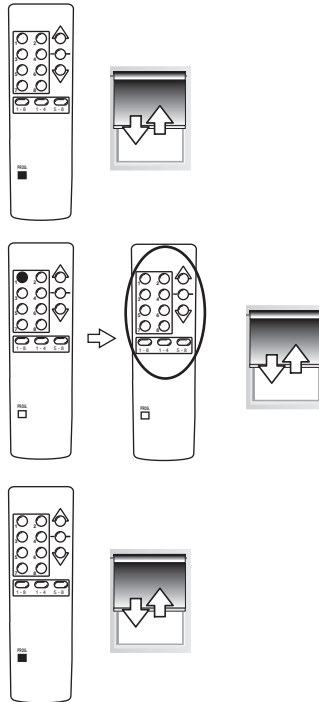
1) Assign a channel

Note : By factory default, the motor is paired to ALL channels on the transmitter. To designate one channel to a particular blind, the user must first delete unwanted channels (see step DELETE A CHANNEL).

To enter in programming mode: Press on the transmitter prog button until the shade jogs.

To program one channel : press on key 1 and next on the key of the channel to program (1 to 8) or channel group until the shade jogs.

To exit programming mode: press on the transmitter prog button until the shade jogs..



2) Delete a channel

To enter in programming mode: Press on the transmitter prog button until the shade jogs.

To erase one channel: press on key 8 and next on the key of the channel to remove (1 to 8) or channel group until the shade jogs.

To erase all channels: press on key 8 and next on key 1_8 until the motor shade jogs..

To exit programming mode : press on the transmitter prog button until the shade jogs..

Available at www.AV-Outlet.com

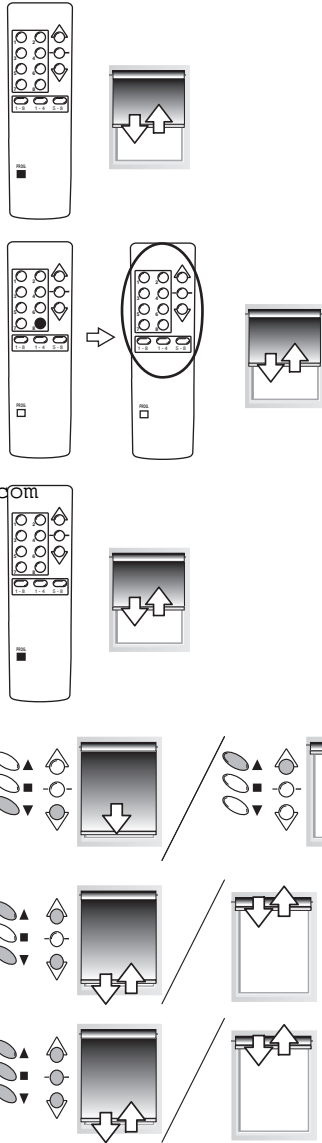
Change the direction of rotation

Move the shade to the UP or DOWN end limit.

Press the UP and DOWN buttons simultaneously until the shade jogs.

Press the UP, STOP and DOWN buttons simultaneously until the shade jogs again.

Press the UP button to check the new direction of rotation.



End limit re- adjustment

UP LIMIT

- 1) Press the UP button, to move the shade to the LIMIT to be readjusted.
- 2) Press the UP and DOWN buttons simultaneously until the shade jogs.
- 3) Press the UP or DOWN button to move the shade to the new desired position.
- 4) To confirm the new limit press the STOP button until the shade jogs.

DOWN LIMIT

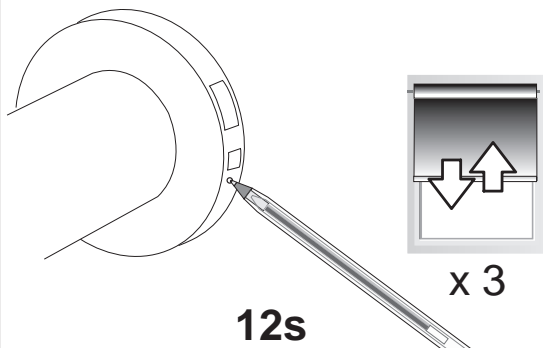
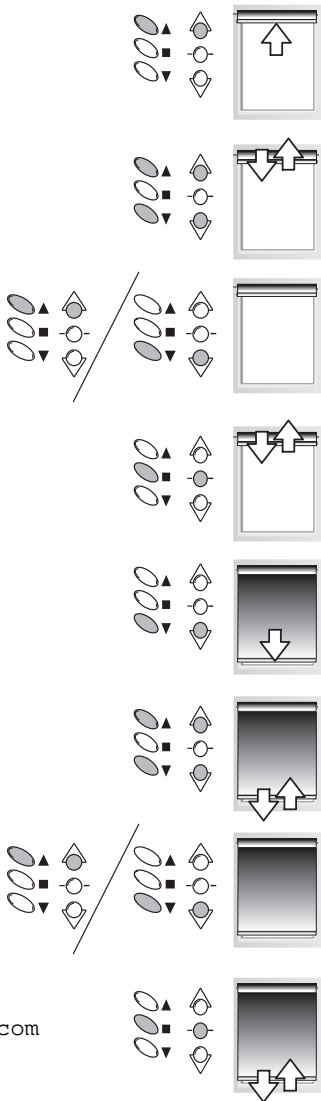
- 1) Press the DOWN button, to move the shade to the LIMIT to be readjusted.
- 2) Press the UP and DOWN buttons simultaneously until the shade jogs.
- 3) Press the UP or DOWN button to move the shade to the new desired position.
- 4) To confirm the new limit press the STOP button until the shade jogs.

Available at www.AV-Outlet.com

Erase the memory of the motor.

N.B.: This reset deletes all control points and intermediate positions programmed. The motor returns to factory mode.

Press and hold the «prog» button for 12s until the shade jogs 3 times. The first at 2s, the second at 7s and the third at 12s.



Technical data

Voltage	12V
Power source	AA 1.5V Lithuim (x8)
Operating temperature	0°C / 60 °C
Protection rating	IP 30
Torque	1.1 Nm
Average Speed	27 rpm

Available at www.AV-Outlet.com

TROUBLESHOOTING

If the motor does not move :

- check the wiring connection.
- make sure the batteries are new.
- if using battery tube, make sure the batteries are installed with the correct polarity.
- check the batteries of the remote control.
- make sure the remote control is IR1 or IR8.

If the motor stops working after excessive use wait for the motor to cool 5 minutes.

If the limits are not accurate, readjust the limits.

If the motor stops operating normally, the battery voltage may be too low. Replace batteries.