

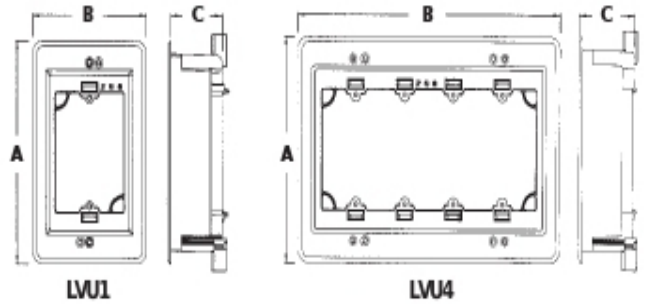
New!

Recessed Low Voltage Mounting Brackets

Single through 4-gang brackets for retrofit or new construction. Available in paintable white (trim plate) and black. Designed to install *LOW VOLTAGE Class 2 ONLY*.

CATALOG NUMBER	UPC/DCI/NAED MFG #01 8997	DESCRIPTION	UNIT PKG	STD PKG	DIM A	DIM B	DIM C
LVU1W	00285	Single Gang/White	1	4	6.698	4.200	2.000
LVU1BL	00286	Single Gang/Black	1	4	6.698	4.200	2.000
LVU2W	20011	2-Gang/White	1	4	6.698	6.012	2.048
LVU2BL	20014	2-Gang/Black	1	4	6.698	6.012	2.048
LVU3W	20012	3-Gang/White	1	1	6.818	7.930	2.048
LVU3BL	20015	3-Gang/Black	1	1	6.818	7.930	2.048
LVU4W	20013	4-Gang/White	1	1	6.818	9.742	2.048
LVU4BL	20016	4-Gang/Black	1	1	6.818	9.742	2.048

PATENTS PENDING.



LVU1W

www.AV-Outlet.com



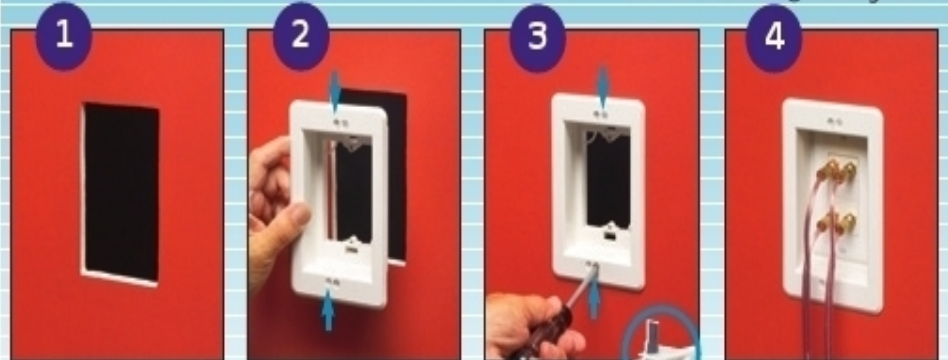
LVU1BL

Features and Benefits

- Non-metallic
- Suitable for old or new work
- Quick and easy installation *and* it's recessed so connectors don't extend past the wall surface
- Adjusts to fit 1/4" to 1-1/2" wall thicknesses
- Specially designed wing flips up when mounting screw is tightened for a secure mount
- Recessed bracket includes loops for tie-off; two attachable knockouts; one device plate; one trim plate; and four screws

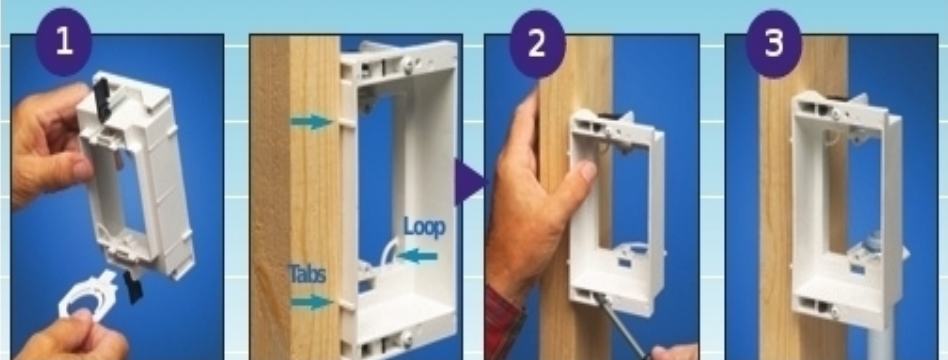
Installation Instructions - Existing Wall

For a video installation demonstration visit our website @ aifittings.com



1 Determine bracket location. Use the front as a template. Level. Mark. Cut hole.
 2 Attach trim plate to bracket with supplied screws. Insert bracket assembly into opening.
 3 Tighten mounting wing screws to hold bracket securely against wall board.
 4 Finished installation. **LVU1W** shown. Connectors *stay inside* this **recessed** low voltage mounting bracket.

Installation Instructions - New Work



1 **Option:** Insert knockouts in openings (back) if installing conduit. Knockouts fit 3/4"
 2 Note positioning tabs and loops for tying off cable.
 3 **Option:** Attach 3/4" or 1" conduit as desired (3/4" shown)