

**NEW!**  
more on  
reverse

# Recessed Indoor IN BOX™

*Non-metallic Recessed Box for New or Retrofit Projects*



DVFR4  
Patent pending

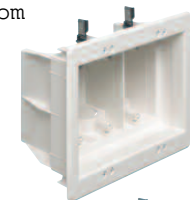


for Power  
OR  
Low Voltage

www.AV-Outlet.com



DVFR3



Three-gang  
DVFR3



Four-gang  
DVFR4

Arlington's recessed indoor IN BOX™ for indoor use, allows flat screen TVs, furniture and countertop items to be mounted or placed flush against the wall.

Made of sturdy, non-metallic material, these boxes are recessed so plugs and/or connectors stay inside without extending past the wall.

In addition to the single and two-gang styles for new construction, indoor IN BOX now comes in three- and four-gang styles.

Designed for new construction *and* retrofit projects, they have mounting wing screws that hold the box securely against the drywall. Plus, the supplied separator allows installers to install power or low voltage in the same box!



- Paintable white trim plate covers edges of cut wall surface
- Adjusts to fit 1/4" to 1-1/2" wall thicknesses
- Finishes with any standard or mid-size wall plate
- In old work, mounting "wings" hold the box securely against drywall when the screws are tightened
- For new construction or old work



CSA with  
grounding lug  
only

**Arlington**

1 Stauffer Industrial Park  
Scranton, PA 18517

**800/233.4717**

**Fax 570/562.0646**

[www.aifittings.com](http://www.aifittings.com)

[www.arlnew.com/InBoxInt](http://www.arlnew.com/InBoxInt)

**Now in three- and four-gang styles for new or old work**

# Recessed Indoor IN BOX™

Single through four-gang styles • For New or Old Work

## New Construction Installation



1 Mount box to stud.

Note **tabs** for proper positioning of box for 1/2" wall finish.



2 Install wall board. Pull wires. Insert voltage separator if installing power and low voltage Class 2 wiring.



3 Attach paintable trim plate with screws provided.



4 Tighten mounting wing screws to pull the box securely against the wall board.

www.AV-Outlet.com



DVFR4W



DVFR3W



Catalog Number	UPC/DEI/NAED Mfg. #018997	Indoor IN BOX™ Device Box	For New Construction or Retrofit	Color	Unit/Std Pkg
DVFR3W	14340	Three-gang combo box	Power and low voltage	White	1
DVFR3BL	14341	Three-gang combo box	Power and low voltage	Black	1
DVFR4W	14342	Four-gang combo box	Power and low voltage	White	1
DVFR4BL	14343	Four-gang combo box	Power and low voltage	Black	1

Includes non-metallic recessed box, voltage separator, two NM94 and one NM95 cable connectors, one trim plate, one decorator-style wall plate (three-gang for three-gang box; four-gang for four-gang box).

## Retrofit Installation



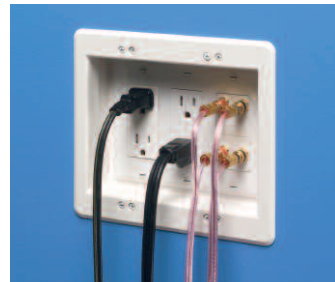
1 Mark box location. Cut hole. Attach trim plate to box with supplied screws. Pull wire(s). Insert box into hole.



2 Tighten mounting wing screws to pull the box securely against the wall board.



3 Insert voltage separator if installing power and low voltage Class 2 wiring.



4 Finished installation – power and low voltage in the same three-gang indoor IN BOX.



CSA with grounding lug only

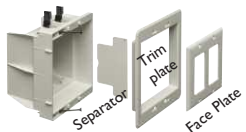


**Arlington**

1 Stauffer Industrial Park  
Scranton, PA 18517  
**800/233.4717**  
**Fax 570/562.0646**  
www.aifittings.com  
www.arlnew.com/InBoxInt

Try them all...indoor IN BOX™ recessed boxes for new or old work

DVFR1W  
Single-gang for power or low voltage



DVFR2W  
Two-gang with separator for power and low voltage

Patents pending  
DVFR3&4 0110/25M

Catalog Number	UPC/DEI/NAED Mfg. #018997	Indoor IN BOX™ Device Box	For New Construction	Color	Unit/Std Pkg
DVFR1W	14330	Single gang	Power or low voltage	White	4
DVFR1BL	14329	Single gang	Power or low voltage	Black	4
DVFR2W *	14331	Two-gang combo box	Power and/or low voltage	White	4
DVFR2BL *	14335	Two-gang combo box	Power and/or low voltage	Black	4
DVFR3C	14337	OPTIONAL Box Cover		White	10
DVFR3CBL	14336	Covers single or two-gang IN BOX when not in use.		Black	10

\*Includes voltage separator



Distributed by